



Nationwide Litigation Support Services

U.S. Legal Support was founded in 1996 with the goal of becoming the first nationwide, all-inclusive litigation support company. Nearly three decades later, we're uniquely equipped to handle both the volume and complexity litigation creates. With on-demand access to **12,000+** offices in more than **2,700** cities across the country and a robust digital infrastructure, we'll accommodate your litigation support needs quickly, comfortably, and securely from anywhere in the country.



Court Reporting

- Network of **5,000+** independent court reporting professionals nationwide
- Remote, in-person, or hybrid proceedings



Strategic Trial Consulting, Graphics, and Presentations

- Team of experienced professionals at TrialEx and DecisionQuest
- Trial exhibits and legal graphics including animations, illustrations, interactive exhibits, 3D models, video/photography, and more
- Mock trials and focus groups
- Witness preparation
- Hot seat operation
- Trial presentation database creation and management



Seamless and Secure Remote Depositions

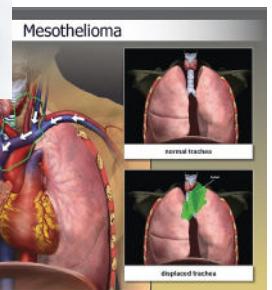
remote
depoPRO™

- High-definition video conferencing with high-fidelity audio capture
- Integrated and advanced exhibit sharing, stamping, annotation, and management
- Live speech-to-text feed of participant audio with instant playback
- Centralized deposition review post proceeding with Testimony Review



Record Retrieval

- Over **27 million** pages of records retrieved annually
- Over **1,100,000** established provider relationships
- Robust digital infrastructure and expediting teams in each time zone



Interpreting & Translations

- Network of **5,000+** interpreters fluent in **200+** languages and regional dialects
- Certified and non-certified document translations



Transcription Services

- Performed by human transcriptionists within the United States
- All file formats supported



Secure Client Portal

SOC 2 Type 2 and HIPAA compliant online portal to manage your litigation support service needs.